

# Océ TDS700

## System Data



## Océ TDS700

*Fits the way you want it*

### Océ printer technology

<i>Printing technology</i>	Electrophotography (LED) with organic photoconductor drum
<i>Resolution</i>	600 dpi × 1200 dpi pico printing
<i>Print optimization</i>	User specified print optimization modes: <ul style="list-style-type: none"><li>■ Lines and text for excellent line accuracy</li><li>■ Standard for excellent grays and smooth solid fills</li><li>■ Poster for excellent grays and smooth solid fills</li></ul>
<i>Fusing technology</i>	Océ Radiant Fusing; instant-on
<i>Toner system</i>	Clean closed toner system Refill toner while printing

### Throughput

<i>Speed</i>	Constant 19.7 linear ft./min.
<i>Warm-up time</i>	None, instant-on
<i>Paper path</i>	Continuous printing speed when printing jobs from different rolls, 1 knife per drawer

### Océ TDS700 printer



<i>Print productivity</i>	■ 4.7 E portrait/min., 8.5 D-ARCH portrait/min., 9.1 D-ANSI portrait/min. for regular media ■ 11.8 ft./min. for heavy media
<i>Document delivery</i>	Standard integrated receiving tray (IRT) for 100 prints (E) without interfering with access to toner and media



# Océ TDS700 system data

## Media

<i>Media sources</i>	Choice of 16 configurations: <ul style="list-style-type: none"><li>■ 2 to 6 rolls and/or</li><li>■ 1 to 3 sheet feeders and</li><li>■ manual sheet feed section</li></ul>
<i>Media capacity</i>	Up to 650 ft. per roll (70 gr/m <sup>2</sup> paper) with automatic switching when roll is empty
<i>Media width</i>	Roll width 11.5" – 36"
<i>Media types</i>	Plain, transparent, recycled, fluorescent and colored papers; films and vellums
<i>Output sizes</i>	DIN and ANSI formats from A4 to Ao or A-size to E-size, up to 49 ft. long

## Environment

<i>Dimensions</i>	56.7" (W) × 31.5" (D) × 58.1" (H)
<i>Weight</i>	Printer 2 roll configuration: 639.3 lbs. <ul style="list-style-type: none"><li>■ 61.7 lbs. for additional roll drawer (2 rolls)</li><li>■ 41.9 lbs. for additional sheet feeder</li></ul> Printer 6 roll 1 sheet feeder: 804.7 lbs.
<i>Main supply</i>	120/200/230 V; 50/60 Hz
<i>Power consumption printer + controller (printer)</i>	Sleep mode: 65 W (6.3 W) Stand-by mode: 90 W (32.4 W) Operational: 1.52 kW (1.46 kW)
<i>Sound pressure</i>	Stand-by mode: 18 dB(A) Operational: 58 dB(A) According to EN 7779 operator position
<i>Dust emission</i>	6 mgr/hr. at continuous operation
<i>Ozone emission</i>	0.3 mgr/hr. at continuous operation
<i>Safety approvals</i>	TüV GS, CETECOM, CE, UL, (c)UL, CB, FCC Class B
<i>Other approvals</i>	EPA-Energy Star®

## Océ TDS700 flexible scanner



## Océ TDS700 flexible scanner

<i>Scanning technology</i>	Océ patented Direct Scan color technology <ul style="list-style-type: none"><li>■ Innovative light source—accurate colors</li><li>■ Single mirror—eliminating the risk of distortion</li><li>■ High resolution camera ensuring color consistency and sharpness</li><li>■ Océ Image Logic® technology real-time image processing</li><li>■ 1 × reduction type CCD camera</li></ul>
<i>Resolution</i>	575 dpi (optical), up to 600 dpi interpolated
<i>Copy and scan modes B&amp;W and Gray (standard)</i>	Lines and text, photo, grays and lines, dark original, blueprint, and transparent
<i>Scan modes (option)</i>	Color
<i>Scanner user interface</i>	■ Intuitive and multilanguage
<i>Scanner templates</i>	■ 5 user-defined scanner templates for copying ■ 5 user-defined scanner templates for scan-to-file
<i>Camera</i>	Single 3 color linear CCD, 21360 pixels per color line, 24 bits color
<i>Scanner panel</i>	Can be positioned as needed



## User interface

## Throughput

<i>Scan/copy speed (standard)</i>	B&W 10 linear ft./min. or 2 in./sec. Grayscale and color (option) 3.5 linear ft./min. or 0.7 in./sec. constant in all scanning modes
<i>High speed logic (option)</i>	Black and white up to 16.4 ft./min. or 3.3 in./sec. Grayscale and color up to 13.1 ft./min. or 2.8 in./sec.

# Océ TDS700 system data

---

<i>Warm-up time</i>	None, instant-on even for color scanning
<i>Output reception</i>	Automatic rewinding Integrated delivery tray (no extra footprint)
<i>Copying behavior</i>	No user intervention with automatic width detection and roll selection
<i>Size recognition</i>	Accurate digital automatic width detection, indication on scanner panel of the exact measured width
<i>Concurrency</i>	■ Continuous feeding of copy jobs and scan jobs during printing of copy and print jobs ■ Pre-programming of next job

## Original

---

<i>Scan width</i>	36 in.
<i>Original feed</i>	■ Face down ■ Right aligned ■ Automatic feed off/on
<i>Original size</i>	Minimum 8 in. × 8 in. (L × W) Maximum 19.7 ft. × 40 in. (L × W) Maximum thickness up to .12 in.

## Imaging

---

<i>Image processing</i>	Océ's patented Image Logic technology in 4 steps converting RGB data into 256 levels of grayscale, removing unwanted background, sharpening text, enhancing weak information and ensuring smooth gradients
<i>Exposure control</i>	Automatic, manual fine adjustment, background compensation (on/off)
<i>Reproduction scale</i>	Custom zoom 10–1000%, adjustable 0.1% steps Auto zoom to standard paper format
<i>Scan accuracy</i>	0.1% ± 1 pixel
<i>1:1 Inaccuracy for E original</i>	Below 0.3%
<i>Image editing</i>	Image shift, align, mirror, crop, delete area
<i>Copy stamping (option)</i>	Stamp content: free text, date, time Number: up to 50 user defined stamps Selection: from comprehensive list on scanner panel
<i>Color space (scan to file option)</i>	Accurate sRGB

## Copy functions

---

<i>Multi-copy mode</i>	1–999 copies
<i>Input modes</i>	■ Single sheet ■ Set collated or not ■ Not collated
<i>Set memory</i>	Up to 999 copies from a set of at least 2400 E originals
<i>Output roll selection</i>	Manual or automatic selection with user defined criteria
<i>Output edges definition</i>	Leading and trailing edge adjustments Standard cut and synchro cut modes

## Scan functions (option)

---

<i>Scan technology</i>	Océ Color Image Logic technology intelligent image processing for B&W, grays and full color with up to six special modes for the “right the first time” results
<i>Resolution</i>	Selectable from 72 up to 600 dpi
<i>Data format</i>	TIFF (uncompressed, Packbits, G3, G4 and LZW) PDF (uncompressed, Flat LZW and G4) CALS JPG
<i>Scan modes</i>	Single scan, stream feed productive batch scanning with or without check plot
<i>Speed in B&amp;W mode</i>	Maximum 16.4 ft./min. at resolution up to 200 dpi
<i>Speed in grays and color mode</i>	Maximum 13.1 ft./min. at resolution up to 150 dpi

## Environment

---

<i>Dimensions</i>	51.2" (W) × 25.6" (D) × 51.2" (H)
<i>Weight</i>	154 lbs.
<i>Main supply</i>	100–230 V, 50–60 Hz
<i>Power consumption</i>	Sleep mode: 5 W, Standby: 20 W, In operation: 105 W
<i>Sound pressure</i>	Sleep mode: < 23 dB(A), Stand-by mode: 23 dB(A), Operational: 50 dB(A) According to EN 7779 operator position
<i>Safety approvals</i>	TüV GS, CE, UL, (c)UL, CB, EMC Directive 89/336/EEC, FCC
<i>Other approvals</i>	EPA-Energy Star

# Océ TDS700 system data

---

## Océ TDS700 productive scanner



### Océ TDS700 productive scanner

---

<i>Scanning technology</i>	Océ Image Logic technology real-time image processing hardware 1 reduction type CCD camera
<i>Scan resolution</i>	■ Scan resolution is 200 × 400 dpi (400 dpi in transport direction) in grayscale domain ■ Océ Image Logic technology converts the 200 dpi (CCD resolution) into 400 dpi
<i>Copy and scan modes</i>	Lines and text, photo, grays and lines, dark original, blueprint, printed matter
<i>Scanner user interface</i>	Intuitive and multilanguage
<i>Scanner templates</i>	4 user-defined templates for copy or scan-to-file
<i>Scanner panel</i>	Easily readable, slightly tilted, back lit scanner panel

### Throughput

---

<i>Scan speed (standard)</i>	16.4 ft./min. or approximately 4 E/min. independent of original mode
<i>Warm up time</i>	None, instant-on
<i>Output reception</i>	Automatic rewinding or Original delivery tray (option)
<i>Copying behavior</i>	Automatic, no user intervention with automatic width detection and roll selection
<i>Size recognition</i>	Automatic width detection with built in sensor
<i>Concurrency</i>	■ Continuous feeding of copy jobs and scan jobs during printing of copy jobs and print jobs ■ Pre-programming of next job

<i>Original feed</i>	■ Face down, right aligned ■ Automatic feed off/on
<i>Originals</i>	■ Rewind original to front off/on ■ Automatic original size detection ■ Image width: 8" – 36" ■ Original width: 8" – 40" ■ Original length: 6" – 49 ft.
<i>Maximum thickness</i>	.04 in. of original and up to .12 in. for binding strip

### Imaging

---

<i>Image processing</i>	Océ patented Image Logic technology in 4 steps, converting data in 256 levels of grayscale, removing unwanted background, sharpening text, enhancing weak information and ensuring smooth gradients.
<i>Exposure control</i>	Automatic, manual fine adjustment, background compensation on/off
<i>Reproduction scale</i>	■ Scale: 25% – 400% (adjustable in 1% and 0.1% steps) ■ Programmable fixed steps ■ Auto scale to paper size ■ Scale table with predefined media size conversions
<i>Scan accuracy</i>	0.1 %
<i>1:1 inaccuracy for E original</i>	Below 0.3%
<i>Image editing</i>	■ Image align: horizontal left, middle, right ■ Image align: vertical top, centre, bottom ■ Image shift: horizontal/vertical ■ Image mirroring
<i>Copy stamping (option)</i>	Stamp content: free text, date, time Number: up to 50 user defined stamps Selection: from comprehensive list on scanner panel

### Copy functions

---

<i>Multi copy mode</i>	1–999 copies
<i>Input modes</i>	Single sheet, Set collated or not, Matrix copy (option)
<i>Set memory</i>	Up to 999 copies from a set or up to 2,400 E originals
<i>Auto zoom</i>	Copy sets with different original sizes to a predefined size without the need to adjust the zoom factor after each original

# Océ TDS700 system data

---

<i>Output roll</i>	Automatic roll selection, manual, user defined
<i>Output edges</i>	Leading and trailing edge adjustments Standard cut and syncho cut modes

## Scan functions (option)

---

<i>Scan technology</i>	Océ Image Logic technology intelligent image processing for B&W, grays with up to 6 special modes for the “right the first time” results
<i>Resolution</i>	Selectable from 75 up to 400 dpi
<i>Data format</i>	TIFF (uncompressed, Packbits, G3, G4 and LZW) PDF (uncompressed, Flat LZW and G4) CAL5
<i>Scan modes</i>	Single scan, stream feed productive batch scanning with or without check plot
<i>Speed in B&amp;W and Gray mode</i>	32 ft./min. at resolutions up to 200 dpi 16.4 ft./min. at resolutions over 200 dpi to 400 dpi

## Environment

---

<i>Dimensions</i>	51.7" (W) × 23" (D) × 53.3" (H)
<i>Weight</i>	198 lbs.
<i>Main supply</i>	100–230 V, 50/60 Hz
<i>Power consumption</i>	Standby: 97 W In operation: 101 W
<i>Sound pressure</i>	Standby: 19 dB(A) In operation: 57 dB(A) According to EN 7779 Operator position
<i>Safety approvals</i>	TüV GS, CETECOM, CE, UL, (c)UL, CB, FCC
<i>Other approvals</i>	EPA-Energy Star

## Océ Power Logic® controller for the Océ TDS700

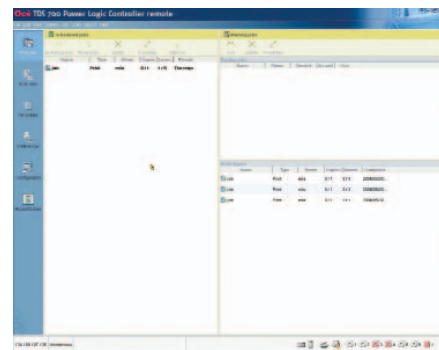
---

<i>Platform</i>	Océ controller with Windows® XP embedded
<i>Concurrency</i>	■ Print, copy, and scan simultaneously ■ Process next jobs during printing
<i>Hard disc capacity</i>	80 GB. Two high speed hard discs, one dedicated to file spooling and one for set memory. ■ Up to 999 copies of set of up to 2,400 E ■ Send once, process once, print many

<i>Memory</i>	1 GB, expandable to 2 GB for Océ TDS700 printer or hybrid with scanner
<i>Graphical user interface</i>	Océ TDS700 Power Logic controller Remote (standard) Cabinet, keyboard, mouse and monitor (option)
<i>Standard interface</i>	10/100BaseT with RJ45
<i>Network protocols</i>	TCP/IP, SMB (for scan-to-file only), IPX/SPX, FTP, LPD
<i>Functions</i>	■ Multiple prints: up to 999 ■ Automatic file format sensing ■ Automatic roll selection and switching ■ Plot manipulation; auto-positioning, rotation, auto-scaling ■ Pen management ■ Auto rotate production mode for faster printing
<i>Language sensing</i>	Automatic Language Sensing (ALS)
<i>File formats (standard)</i>	■ Vector: HPGL, HPGL/2, Calcomp ■ Raster: HP-RTL, TIFF 6.0, CAL5-I, NIRS, C4, ASCII, JPEG
<i>File formats (option)</i>	Adobe® PostScript® 3™ PDF printing
<i>Power consumption</i>	Controller: < 100 W
<i>Electrical requirements</i>	100-120/230 V, 50/60 Hz
<i>Applicable software</i>	Océ Power Logic controller software

## Océ TDS700 Power Logic controller remote

---



<i>Basic applications</i>	Océ Power Logic controller application, one integrated application for print job management, scan job management, system status management, scanner templates, system preferences and network configuration
---------------------------	---

# Océ TDS700 system data

---

<i>System status</i>	Controller memory and processor, printer, scanner, media availability: size and type
<i>System access</i>	Password protected access levels with different rights to perform tasks or change system settings: Anonymous, Repro Operator, Key Operator, System Administrator, Océ Service

## Print jobs (Advanced Queue Management)

---

<i>Print job management</i>	Control your document workflow with one queue for print and copy jobs. Three views available to guarantee full control: scheduled jobs, waiting jobs and printed jobs.
<i>Scheduled jobs</i>	<ul style="list-style-type: none"><li>■ Print Interrupt</li><li>■ Move to top</li><li>■ Move to waiting room</li></ul>
<i>Waiting jobs</i>	<ul style="list-style-type: none"><li>■ Print job, delete job</li></ul>
<i>Printed jobs</i>	<ul style="list-style-type: none"><li>■ Print job, delete job, and change properties of the job</li></ul>

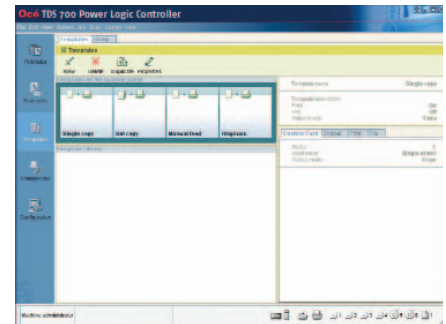
## Scan jobs (option)

---

<i>Applications</i>	Océ Scan Logic® software option activates this window on the controller of the Océ TDS700 multifunction system. Océ Scan Manager is the integrated scanning solution of the Océ TDS700.
<i>Scan destinations</i>	<ul style="list-style-type: none"><li>■ 10 programmable destinations directly selectable from scanner panel</li><li>■ Scan to Web using FTP</li><li>■ Scan to network directory</li><li>■ Scan to controller</li></ul>
<i>File naming</i>	Automatically generates unique file names for each scan. Change file name at point of scanning (GUI kit is required).
<i>View</i>	View scans at point of scanning. Make use of streaming technology particularly productive for viewing scanned documents (GUI kit is required).

## Scanner Templates

---



<i>Application</i>	Customer defines the scanner templates for copy or scan to file. Title of templates is defined by customer to improve usability.
<i>Available templates</i>	Flexible scanner: 5 for copying and 5 for scanning Productive scanner: 4 scanner templates
<i>Templates library</i>	Store 45 scanner templates, description of stored settings can be read on scanner panel

## System preferences

---

<i>Application</i>	This application allows you to customize, change and save the system parameters to tune the system to the users document workflow. These parameters determine the default behavior of the print and scan systems.
<i>Accessibility</i>	Only the user with proper security rights can change and store the system settings
<i>Store system settings</i>	Unlimited number of system settings can be stored
<i>Functions</i>	Pen settings, printer language settings 19 languages, and general administrator settings

## Network configuration

---

<i>Application</i>	Customize, change and save the parameters of the Océ TDS700 related to the network and IT infrastructure
<i>Functions</i>	Host information, network settings, system set up, and advanced security settings

# Océ TDS700 system data

---

## Océ Matrix Logic® technology (Océ TDS700 productive scanner only)

---

Océ Matrix Logic technology makes it possible to copy a set once and print it out in different formats, for different user groups to support the document distribution rules within a company.

- Functions*
- Banner page
  - Set up different distribution groups (i.e. store and select predefined print settings)
  - Define different binding/finishing per set

## Océ Print Exec® software workgroup (option)

---

Océ Print Exec software workgroup is a powerful, smart and efficient web-based software application for printing sets in workgroup environments.

- Functions*
- Back-channel printer status information
  - Stamping
  - Set up different print configurations
  - Banner page
  - Pre-viewing plot files
  - Save and recall print jobs
  - Reprint Jobs

## Océ Account Center (option)

---

Océ Account Center is a software application that enforces the entry of valid account information for system use and tracking of printing, copying, and scanning activities.

- Functions*
- Printer and scanner lock out
  - Define number of accounting fields
  - Customized account fields
  - Pin Code functionality
  - Alpha-numeric account input
  - Customized filters
  - Basic reports to be viewed in Excel®
  - Open interface to integrate Océ Account Center with third party accounting software solution

## Drivers and job-submission software

---

- Océ HDI driver* For AutoCAD® (LT) 2000, 2000i, 2002, 2004, 2005, 2006, and 2007
- Océ Windows driver*
- Windows 2000, XP, Windows Server 2003, Windows Terminal Server, Citrix® Metaframe
  - Optimized for AutoCAD
  - Microsoft® signature

- Océ Adobe PostScript drivers* Windows 2000, XP, Windows Server 3 2003 and Mac® OS9 and OSX
- Océ Print Exec Workgroup Basic software (standard)* Web-based software applications for easy printing of collated sets of up to 10 documents. Includes online viewing of printer status and scheduled prints and waiting room.

## Copy delivery tray (option)

---

- Model* Wheeled delivery tray with blower unit
- Capacity* Up to 150 sheets (media type dependent) from A3 to Ao/E+
- Power consumption* <40 W
- Mains supply* 120/230V, 50/60 Hz
- Dimensions* 46.1" (W) × 42.9" (D) × 56.7" (H)
- Weight* 78.3 lbs.

## Océ online folder (option)

---

Océ TDS700 online folder is fully integrated with the hybrid system. The user selects the right folding method, binding method, and delivery method on the scanner panel for copying and in the drivers or job submission tool for printing. The default folding method can be set via Océ TDS700 Power Logic controller remote.

- Folding methods* DIN, Ericson, AFNOR-like  
Fanfold, fanfold and cross fold  
Length folding package:  
10.9" – 12.2"  
Width folding package:  
7.3" – 9.1"
- Binding methods* Binding edge: .59" – .79"  
Reinforcement unit (option): Glue perforated plastic strips to folded package for opening folded document without taking it out of a binder
- Media material* Plain paper
- Media size*
- Width: 11" – 36"
  - Length: 8 in. up to 8.2 ft. (cross fold and fanfold)
  - Up to 19.7 ft. (fanfold only)
- Delivery methods* Integrated bins for fanfold and cross fold
- Stacker: 22 folded E
  - Delivery belt unit (option): ± 75 folded E
- Mains supply* 120/230V, 50/60 Hz
- Power consumption* Below 100 W operating
- Weight* 485 lbs.

# Océ TDS700 system data

## Océ Double Decker (option)

The Océ Double Decker is a high volume stacker with two bins for an efficient delivery of unfolded prints. Each bin has a capacity of 750 sheets (Engineering bond 20 lbs. or Plain Paper 75 g/m<sup>2</sup>).

Number of trays 2

Total capacity 1,500 sheets Plain Paper 75 g/m<sup>2</sup>

Capacity per tray 750 sheets Plain Paper 75 g/m<sup>2</sup>

- Tray selection
- Manual switch
  - Sheets are delivered to upper tray
  - Sheets are delivered to lower tray
  - Automatic: if tray is full, sheets go to the other tray ("tray full" by audio signal)

<i>Delivery method</i>	Face up
<i>Stacking accuracy</i>	High accuracy by use of magnetic alignment guides (eight included with Océ Double Decker)
<i>Supported media</i>	Same media as for printers (except for film)
<i>Supported media sizes</i>	A, B, C, D, E, maximum stacking length 47.2"



"Océ," "Océ Image Logic," "Océ Power Logic," "Océ Scan Logic," "Océ Matrix Logic," and "Océ Print Exec" are registered trademarks of Océ-Technologies B.V. The "Océ" logo is a registered trademark of Océ-Nederland B.V. Corporation. "Windows," "Excel," and "Microsoft" are registered trademarks of Microsoft Corporation. "Citrix" is a registered trademark of Citrix Systems, Inc. "AutoCAD" is a registered trademark of Autodesk, Inc. "Adobe" and "Postscript" are registered trademarks of Adobe Systems, Inc. "Postscript 3" is a trademark of Adobe Systems, Inc. "Mac" is a registered trademark of Apple Computer, Inc. "Energy Star" is a U.S. registered mark.



**Printing for Professionals**

## Océ North America, Inc.

### Océ Wide Format Printing Systems

5450 North Cumberland Avenue  
Chicago, Illinois 60656  
1-800-714-4427  
1-773-714-4076  
Fax 1-773-714-4056  
www.oceusa.com  
email: us.info@oce.com

### Océ-Canada Inc.

4711 Yonge Street, Suite 1100  
Toronto, Ontario, M2N 6K8  
Canada  
1-800-668-1945  
Fax 1-416-224-5778  
email: info.ca@oce.com

### Océ Mexico S.A. de C.V.

Ave. Pol. Paseo de la Reforma  
No. 1236 Piso 4  
Col. Sante Fe  
Delegación Cuajimalpa  
México, D.F. 05348  
México  
52-55-5089-8700

© 2006 Océ.

Illustrations and specifications do not necessarily apply to products and services offered in each local market. Technical specifications are subject to change without notice.

ES-23701  
ES-11/06 SLS/AV